



Recommended Cleaning Guide

IMPORTANT

Read these instructions thoroughly before cleaning.

To ensure the Design Links Matting System remains in top condition, it is important to properly clean the Design Links mat using these instructions.

Recommended Cleaning Tool List:

1. Flat head screwdriver
2. Rubber mallet
3. Wet/dry vacuum (Shop Vac) with wide and narrow head attachments
4. Mop



Flat head screwdriver



Rubber mallet



Mop



Wet/dry vacuum



Design Links System Weekly Cleaning

1

Using the wide attachment on the vacuum, clean the top surface of the mat parallel to the carpet strips.



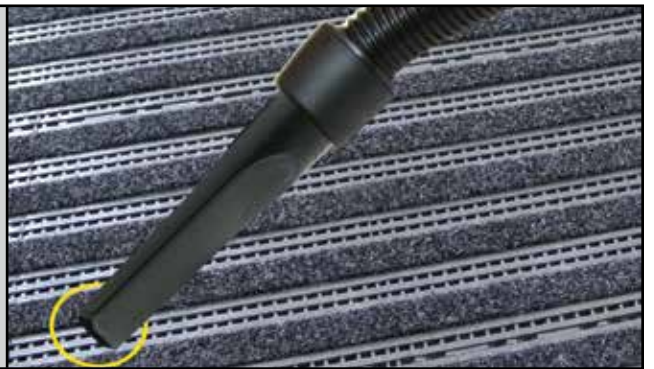
2

Using the narrow attachment on the vacuum, clean the vinyl spaces between the carpet strips.



2a

Be sure to vacuum the vinyl spaces between the carpet.



3

Finish the cleaning by damp mopping the entire surface of the mat using a low pH standard cleaning solution.



4

The Design Links surface and openings should be clean of dirt and debris.



Design Links System Semi-Annual Cleaning or as Needed

1

Starting on the right side of the system, lift the Design Links from the corner. Use the flat head screwdriver if needed.



2

With both hands, pull the matting back.



3

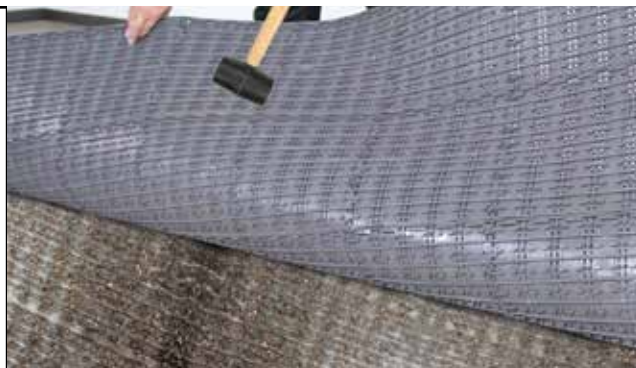
Roll half of the Design Links mat over onto the other half from right to left.

It is important to leave the other side of the mat secured to the retainers.



4

A rubber mallet may be used to pound the back of the Design Links to dislodge the debris and dirt from the holes in the mat.



5

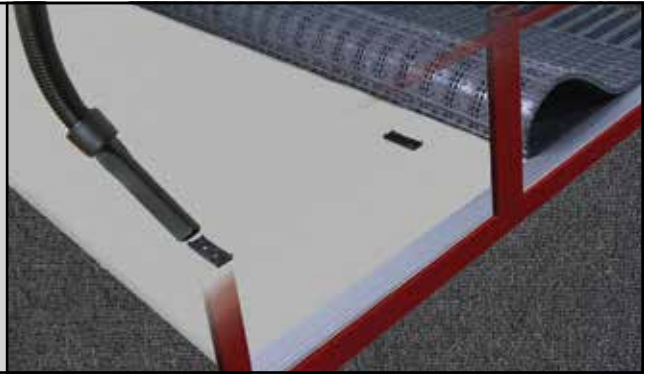
Vacuum the debris on the floor under the mat.



Design Links System Semi-Annual Cleaning or as Needed

6

Carefully vacuum the area around the mat retainers, clearing all loose dirt or gravel.



7

Roll the first half back in place.



8

Using a rubber mallet, tap the area over the mat retainers to properly engage the mat to the retainers. This will allow the mat to be flat on the floor.



9

Replace the edge of the Design Links.

Repeat steps 1-9 on the left side of the Design Links system.



10

Finish by vacuuming the top surface over the entire Design Links system to remove any surface dirt and debris.

